

Foster Supply adds another quality product to our inventory.

- Architectural stone veneer
- Wet cast with 6000 psi light weight concrete mix.
- Water repellent add mixture to increase durability of the product
- Foster Supply can also provide all other materials used to install the stone. Including water barrier, grout, and metal lathe.
- Multiple colors available.



There are many beautiful indoor or outdoor applications for this product. Add a natural stone look to your home inside or out.



Scan bar code for installation video



www.FosterSupply.com

Scott Depot, WV: (304) 755-8241

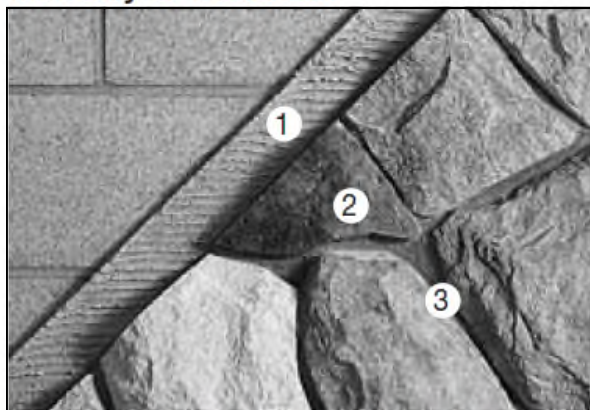
Clarksburg, WV: (304) 326-0195

Harrodsburg, KY: (859) 734-9696

London, KY: (606) 864-0216

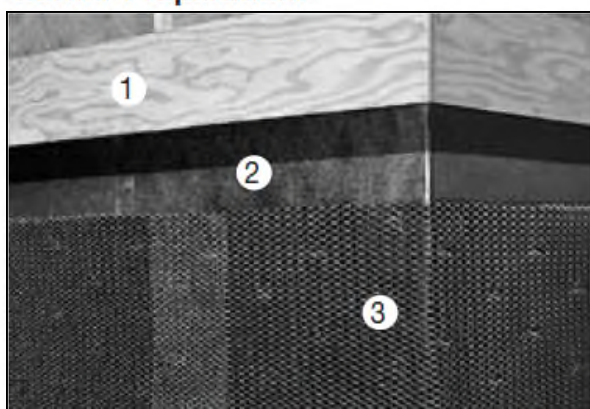
Typical Installations

Masonry or Concrete:



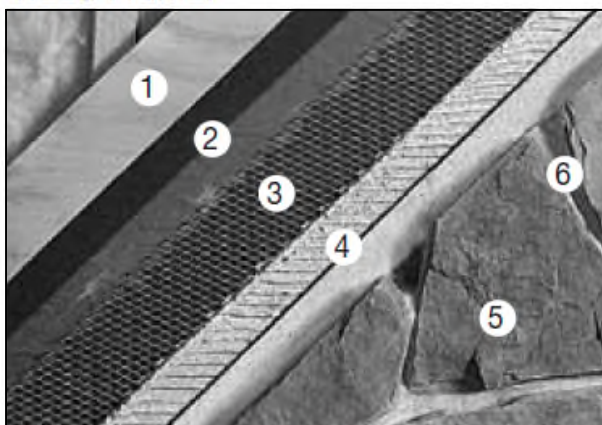
In sequence: (1) mortar applied directly to untreated, unpainted masonry, concrete or stucco, (2) Cultured Stone® manufactured stone veneer, (3) mortar joint.

Corner Preparation:



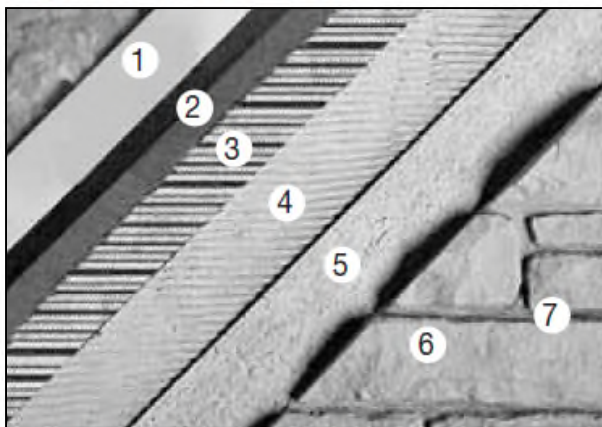
Water resistant barrier and lath must continuously wrap a minimum of 16" at outside and inside corners and fasten at a framing member. Lap water resistant barrier a minimum of 4" at vertical and 2" at horizontal lap joints. Lap lath a minimum of 1" at vertical and horizontal seams.
(1) wall substrate, (2) two layers of water resistant barrier, (3) metal lath.

Wood Frame:



In sequence: (1) sheathing, (2) two layers of water resistant barrier, (3) galvanized metal lath, (4) mortar/scratch coat/setting bed (5) Cultured Stone® manufactured stone veneer, (6) mortar joint.

Rigid Foam Insulation:



In sequence: (1) rigid foam insulation, (2) two layers of water resistant barrier, (3) galvanized metal lath, (4) scratch coat, (5) mortar setting bed, (6) Cultured Stone® manufactured stone veneer, (7) mortar joint.

Installation of this product does not require a lot of equipment, but must be done correctly in order to ensure a long lasting water shedding veneer. Scan the image below to see installation video, or go to the website.

<http://www.youtube.com/watch?v=YPfjBmjnJSE>



**FOSTER
SUPPLY** INC

www.FosterSupply.com

Scott Depot, WV: (304) 755-8241

Clarksburg, WV: (304) 326-0195

Harrodsburg, KY: (859) 734-9696

London, KY: (606) 864-0216